

MLG52PD

MAYTAG® COMMERCIAL
ENERGY ADVANTAGE™
MULTI-LOAD STACK DRYER



Shown in Stainless Steel

LEGENDARY MAYTAG DEPENDABILITY

Maximizing your equipment investment for over a half century.

ENERGY-SAVING SOLUTIONS

Maytag built the first appliance ever to receive the ENERGY STAR® label. Today we offer energy-saving laundry solutions for all commercial laundry needs—from energy-efficient dryers to highly efficient ENERGY STAR®-qualified washers—to help you save money and build profits.

UPDATED CONTROLS

New soft-touch keypad for ease-of-use and durability. Includes Maytag® Accu Trac® audit system that uses a PDA to communicate with the microprocessor controls—so you can set up, monitor and audit your equipment in seconds.

CAPACITY:

- 50 lb. Capacity
- 10% Greater Per Pocket Capacity Than a Maytag® 45-lb. Stack Dryer

FOR YOUR CUSTOMERS:

- Fast-Drying Axial 100% Airflow System Enhances Airflow
- ThermoGuard™ System Helps Prevent Laundry Overheating
- Owner-Programmable Single-Phase Reversing
- Extra-Large Door Openings With Dual Pane Glass Door
- Time Remaining Digital Display
- Self-Diagnostic Microprocessor Controls

FOR YOUR OPERATION:

- Low BTUs and Fast Dry
- Enhanced Insulation For Greater Efficiency
- Front Serviceable
- Accu Trac® Audit System With Two-Way Data Communication
- Single Payment System
- Front Access For Easier Self Service
- 2 Large-Capacity Lint Drawers

BUILT-TO-LAST™ FEATURES:

- Heavy-Duty Enclosed Motors
- Fire Suppression System
- Four-Point Roller Support System
- 5-Year Limited Warranty—All Parts Covered

LAUNDRY SOLUTIONS
YOU CAN *DEPEND ON.*



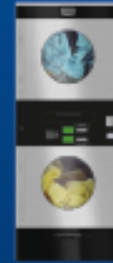
15012 Eddie Drive
Humble, Texas 77396
281-441-2465
800-456-2378
281-441-2933 (fax)
www.bestwashinc.com

visit maytagcommerciallaundry.com
or call 800-662-3587



OUR COMMITMENT TO DEPENDABLE QUALITY

At Maytag, we believe durable goods should remain just that. That's why every Maytag® product is constructed of the highest-quality materials and with the utmost in precision craftsmanship. It's also why we stand behind our equipment with solid service and support from our professional Maytag laundry suppliers. Simply put, when you choose Maytag® products, you ensure your peace of mind.



MLG52PD

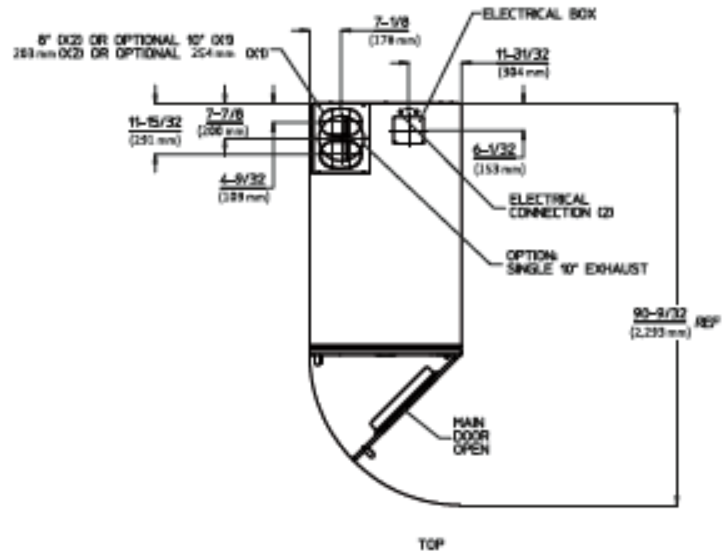
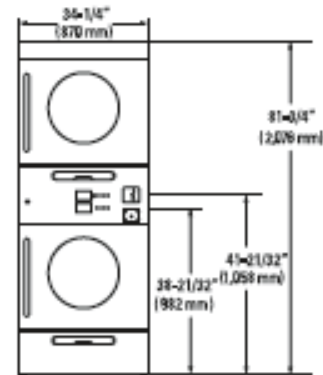
MAYTAG® COMMERCIAL ENERGY ADVANTAGE™ MULTI-LOAD STACK DRYER

Maytag® Commercial Energy Advantage™ Multi-Load Stack Dryer

MICROPROCESSOR COIN-DROP

| DRYER SPECIFICATIONS | |
|--|----------------------|
| MODEL | MLG52PD |
| MOTOR | |
| Single-phase, thermoprotected against overload, auto-reset | • |
| Drive Motor — HP (kw) | 1/3 (0.25) |
| Blower Motor — HP (kw) | 1/4 (.188) |
| CAPACITY | |
| Lbs. (kg) per drying chamber | 2 x 50 (2 x 22.68) |
| Cu. ft. (cu. m) per drying chamber | 2 x 18 (2 x 453) |
| AIRFLOW | |
| Cfm (cmm) per drying chamber | 540 (15.20) |
| TUMBLERS | |
| Diameter — in. (mm) | 2 x 32.75 (2 x 832) |
| Depth — in. (mm) | 2 x 32.75 (2 x 832) |
| ELECTRICAL REQUIREMENTS | |
| Export Models — options available | 220-380V/1PH or 3 PH |
| BREAKER/FUSE REQUIREMENTS | |
| Amps per drying chamber | 15 |
| EXHAUST DUCT DIAMETER | |
| In. (mm) | 2 x 8 (203) |
| Optional | 1 x 10 (254) |
| GAS RATING | |
| BTU/hr. (kcal/hr.) per drying chamber | 110,000 (27,720) |
| GAS INLET | |
| M.N.P.T. in. (mm) | 2 inlets, 1/2 (12.7) |
| COLORS | |
| White | • |
| Stainless Steel | • |
| APPROXIMATE WEIGHT | |
| Crated — lbs. (kg) | 980 (435) |
| Uncrated — lbs. (kg) | 910 (413) |
| DIMENSIONS | |
| Height — in. (mm) | 81.75 (2,076) |
| Width — in. (mm) | 34.25 (870) |
| Depth — in. (mm) | 56.53 (1,438) |
| Door opening diameter — in. (mm) | 23.75 (603) |

See specific instructions for proper installation.
Because of continuous product improvement, Maytag reserves the right to change specifications without notice.



15012 Eddie Drive
Humble, Texas 77396
281-441-2465
800-456-2378
281-441-2933 (fax)
www.bestwashinc.com



5 YEAR LIMITED WARRANTY ALL PARTS COVERED

For a period from the date of original purchase through the time listed above, the designated parts that fail in normal commercial use will be repaired or replaced free of charge for the part itself, with the owner paying all other costs, including labor, transportation and customs duty. Chemical damage is excluded from all warranty coverage. See complete warranty for details.