

# MDE/MDG18PD

MAYTAG® COMMERCIAL  
SUPER-CAPACITY DRYER



#### LEGENDARY MAYTAG DEPENDABILITY

Maximizing your equipment investment for over a half-century.

#### FOR YOUR CUSTOMERS:

- Extra-Large 7.4-cu.-ft. Capacity
- Simple Controls Are Easy for Multiple Users
- Powerful, High Airflow Dries Load Quickly, Saving Time
- Extra-Large Door and Drum Openings Allow Quick, Easy Loading and Unloading

#### FOR YOUR OPERATION:

- TurboVent™ Technology Provides Faster Drying and Better Performance on Long Vents
- 4-Way Venting—Right or Left Side, Back or Front
- Advanced Computer Trac® Controls Allow for Easy Programming
- Maytag Connect 360™ Wireless Audit System—Option
- Large-Capacity Metal Mesh Lint Filter
- Front Access for Easier Self-Service
- Reversible Side-Swing Door
- Dual Coin-Drop—Option

#### BUILT-TO-LAST™ FEATURES:

- Premium Porcelain-Enamel Top
- Four-Roller Suspension with Permanently Lubricated Bearings
- Blower Guard Reduces Service Calls
- High-Security Vault
- 5-Year Limited Warranty—All Parts Covered

LAUNDRY SOLUTIONS  
YOU CAN *DEPEND ON.*

FASTER DRYING WITH  
TURBOVENT™ TECHNOLOGY

visit [maytagcommerciallaundry.com](http://maytagcommerciallaundry.com)  
or call 800-662-3587

MY130067



## OUR COMMITMENT TO DEPENDABLE QUALITY

At Maytag, we believe durable goods should remain just that. That's why every Maytag® product is constructed of the highest-quality materials and with the utmost in precision craftsmanship. It's also why we stand behind our equipment with solid service and support from our professional Maytag laundry suppliers. Simply put, when you choose Maytag® products, you ensure your peace of mind.

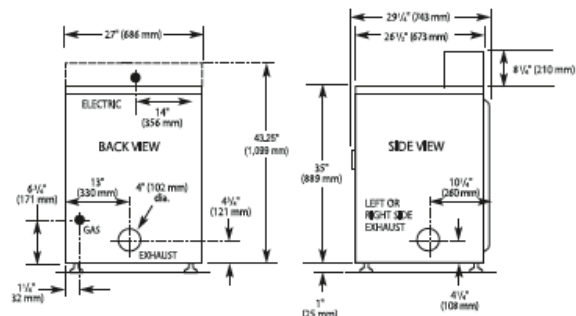


## MDE/MDG18PD MAYTAG® COMMERCIAL SUPER-CAPACITY DRYER

### Maytag® Commercial Super-Capacity Dryer MICROPROCESSOR COIN-DROP

DRYER SPECIFICATIONS	
MODEL	MDE/MDG18PD
<b>MOTOR</b>	
Single-phase, thermoprotected against overload, auto-reset	✓
HP (kw)	.33 (1.25)
<b>TUMBLE SPEED—RPM</b>	50 ± 1
<b>CAPACITY</b>	
Cu. ft. (liters)	7.4 (210)
<b>AIRFLOW</b>	
Gas models—cfm (cmm)	230 (6.5)
Electric models—cfm (cmm)	215 (6.1)
<b>ELECTRICAL REQUIREMENTS</b>	
MDE model—voltage/Hz	240/60*
MDG model—voltage/Hz	120/60
Export models—voltage/Hz	220–240/50
<b>BREAKER/FUSE MINIMUM REQUIREMENTS</b>	
MDE model—amps/MDE export	30/25
MDG model—amps/MDG export	15/10
<b>ELECTRIC HEATING ELEMENT—WATTS</b>	
Domestic models	5,600
Export models	4,600
Canadian models	5,250
<b>GAS RATING</b>	
MDG model—BTU/hr. (kcal/hr.)	24,000 (6,048)
MDG export model—BTU/hr. (kcal/hr.)	20,000 (5,040)
<b>GAS INLET</b>	
MDG model—in.	3/8 N.P.T.
<b>EXHAUST DUCT DIAMETER</b>	
In. (mm)	4 (101.6)**
<b>ELECTRONIC BURNER IGNITION</b>	
MDG model	✓
<b>AUTOMATIC PRESSURE REGULATOR</b>	
MDG model	✓
<b>ADJUSTABLE LEVELING LEGS</b>	
	✓
<b>APPROXIMATE WEIGHT</b>	
Crated—lbs. (kg)	154 (69.8)
Uncrated—lbs. (kg)	140 (63.5)
<b>DIMENSIONS</b>	
Height—in. (mm)	43.25 (1,099)***
Width—in. (mm)	27 (686)
Depth—in. (mm)	29.25 (743)
<b>WARRANTY</b>	
	5-YEAR

\*208-Volt electric element kit available.  
 \*\*Use 4" (101.6 mm) diameter rigid aluminum or galvanized steel duct. Never use plastic, non-metal or combustible duct.  
 \*\*\*Height at top of metercase.  
 Dimensions are for planning purposes only. See specific instructions for proper installation. Because of continuous product improvement, Maytag reserves the right to change specifications without notice.



#### MAXIMUM EXHAUST DUCT LENGTH PER NUMBER OF TURNS

Number Of 90° Turns	Rigid Metal Vent	
	Box Hood and Louvered Style	Angled Hood Style
0	135 ft. (41.2 m)	129 ft. (39.3 m)
1	125 ft. (38.1 m)	119 ft. (36.3 m)
2	115 ft. (35.1 m)	109 ft. (33.2 m)
3	106 ft. (32.3 m)	100 ft. (30.5 m)
4	98 ft. (29.9 m)	92 ft. (28.0 m)

Number Of 90° Turns	Flexible Metal Vent	
	Box Hood and Louvered Style	Angled Hood Style
0	76 ft. (23.2 m)	62 ft. (18.9 m)
1	71 ft. (21.6 m)	57 ft. (17.4 m)
2	67 ft. (20.4 m)	53 ft. (16.2 m)
3	65 ft. (19.8 m)	51 ft. (15.6 m)
4	63 ft. (19.2 m)	49 ft. (14.9 m)





**15012 Eddie Drive  
Humble, Texas 77396  
281-441-2465  
800-456-2378  
281-441-2933 (fax)  
www.bestwashinc.com**

Commercial Laundry Distributor



#### 5-YEAR LIMITED WARRANTY—ALL PARTS COVERED

For a period from the date of original purchase through the time listed above, the designated parts that fail in normal commercial use will be repaired or replaced free of charge for the part itself, with the owner paying all other costs, including labor, transportation and customs duty. Chemical damage is excluded from all warranty coverage. See complete warranty for details.