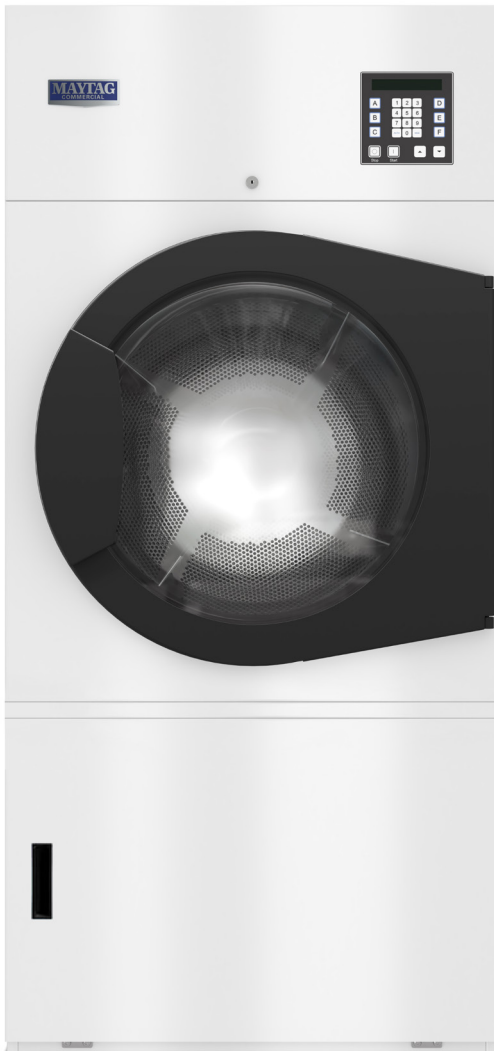


# MAYTAG ADVANTAGE SERIES

DRYER • 50-LB CAPACITY • OPL  
MDG53PN



OPL  
MDG53PNWW pictured above

The Maytag Advantage Series dryers offer elite drying power and fast cycles, helping minimize cost of ownership while boosting energy efficiency. They're built with simple, straightforward designs for low maintenance and quick, easy service. Programmable temperature cycles allow these dryers to tackle large loads with the exact drying power you need. When choosing Maytag Commercial Laundry, the Advantage is simple.

## INTELLIGENT INVERTER DRIVE

Alternates the speed of the drum throughout the cycle, allowing for a soft controlled start and optimized tumbling during drying. The inverter drive also features a simple and reliable single drive belt system for easy serviceability.

## STAINLESS STEEL BASKET WITH TAPERED RIBS

The Maytag Advantage Series comes standard with a stainless steel basket that helps modernize the look of your location and protect against corrosion.

## TRANS-AXIAL AIRFLOW

Combining radial airflow patterns with axial heat input, trans-axial airflow maximizes efficiency while maintaining high performance.

## SINGLE-PHASE REVERSING BASKET

The reversing tumbler rotation helps prevent "roping," eliminates uneven drying and prolonged dry times, and better separates larger items as the tumbler reverses—providing a better dry for a better customer experience. For business owners, the standard single-phase feature eliminates the need for costly electrical service upgrades.

## ADDITIONAL FEATURES

- 50-lb capacity
- 5-Year Limited parts warranty
- Fire Suppression System
- Double-pane door glass
- Variable drum speed
- Pre-heat system
- Fully insulated cabinet
- Self-cleaning lint screen
- Direct spark ignition
- Two-point roller support
- Micro control with auto dry system
- Reversible door



**AMERICA**  
AN AMERICAN COMPANY FOR OVER 100 YEARS

See [maytagcommerciallaundry.com](http://maytagcommerciallaundry.com) for warranty details.

VISIT [MAYTAGCOMMERCIALLAUNDRY.COM](http://MAYTAGCOMMERCIALLAUNDRY.COM) FOR MORE INFORMATION.

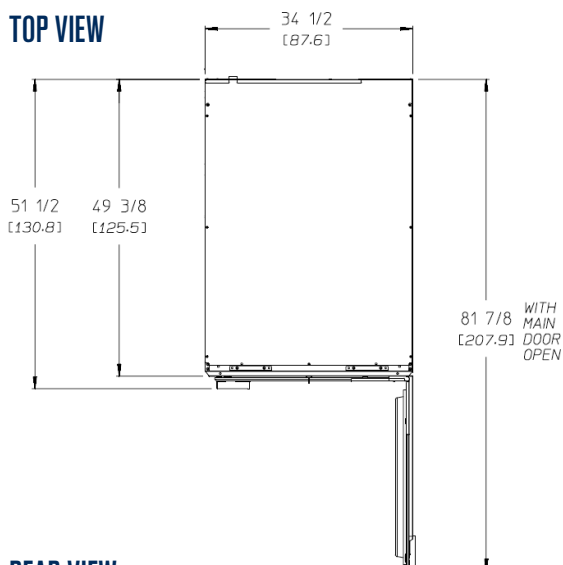
®/™ © 2025 Maytag. All rights reserved.  
MY250431 08/25

# MAYTAG ADVANTAGE SERIES

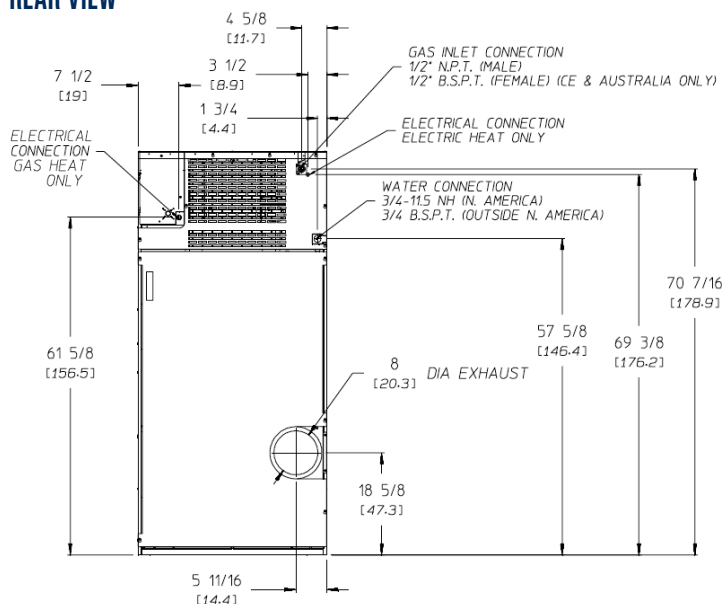
DRYER • 50-LB CAPACITY • OPL  
MDG53PN



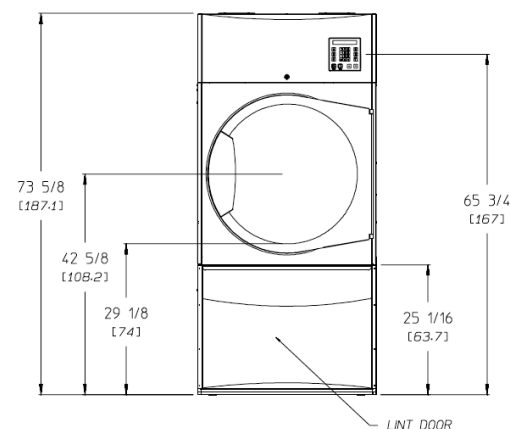
## TOP VIEW



## REAR VIEW



## FRONT VIEW



MDG53NDAWW	OPL GAS
<b>CAPACITY</b>	
Maximum Capacity Dry Weight — lb (kg)	50 (22.67)
Tumbler Diameter — in. (cm)	32-3/4 (83.18)
Tumbler Depth — in. (cm)	37-1/2 (95.25)
Tumbler Volume — cu. ft. (L)	18.3 (518.19)
Tumbler/Drive Motor — hp (kW)	1 (0.75)
Blower/Fan Motor — hp (kW)	3/4 (0.56)
<b>DIMENSIONS</b>	
Cabinet Width — in. (cm)	34-1/2 (87.63)
Cabinet Depth — in. (cm)	49-3/8 (125.41)
Cabinet Height — in. (cm)	73-5/8 (187.1)
Door Opening (diameter) — in. (cm)	27 (68.58)
Door Sill Height — in. (cm)	29-1/8 (74)
Dryers per 20'/40' Container	10/20
Dryers per 48'/53' Container	25/28
<b>APPROXIMATE WEIGHT</b>	
Net Weight — lb (kg)	655 (297.10)
Shipping Weight — lb (kg)	710 (322.05)
<b>ELECTRICAL REQUIREMENTS</b>	
Voltage Available	120V 1ø 2w 60 Hz
Approx. Amp Draw (Amps)	9.8
Breaker Size (Amps)	15
<b>GAS / AIRFLOW / CONNECTIONS</b>	
Airflow — CFM (CMM)	850 (24.06)
Heat Input — BTU/hr (kcal/hr)	125,000 (31,500)
Gas Inlet Connection Size	1/2" N.P.T. (male)
Exhaust Connection (diameter) — in. (cm)	8 (20.32)
Water Connection	3/4"-11.5 NH



Dimensions are for planning purposes only. See specific instructions for proper installation. Because of continuous product improvement, Maytag reserves the right to change specifications without notice.