

MAYTAG ADVANTAGE SERIES

STACKED DRYER • 45-LB CAPACITY • VENDED
MLG46PD



COIN EQUIPPED
MLG46PDAWS pictured above
MLG46PDAWW pictured at left

The Maytag Advantage Series dryers offer elite drying power and fast cycles, helping minimize cost of ownership while boosting energy efficiency. They're built with simple, straightforward designs for low maintenance and quick, easy service. Programmable temperature cycles allow these dryers to tackle large loads with the exact drying power you need. When choosing Maytag Commercial Laundry, the Advantage is simple.

STAINLESS STEEL BASKET WITH TAPERED RIBS & FRONT

The Maytag Advantage Series comes standard with a stainless steel basket and front panel (front panel on MLG46PDAWS only) that helps modernize the look of your vended location and protect against corrosion.

TRANS-AXIAL AIRFLOW

Combining radial airflow patterns with axial heat input, trans-axial airflow maximizes efficiency while maintaining high performance.

SINGLE-PHASE REVERSING BASKET

The reversing tumbler rotation helps prevent “roping,” eliminates uneven drying and prolonged dry times, and better separates larger items as the tumbler reverses—providing a better dry for a better customer experience. For business owners, the standard single-phase feature eliminates the need for costly electrical service upgrades.

SINGLE BELT DRIVE SYSTEM

Our single belt drive system allows for simplicity and emphasizes reliability with fewer moving parts.

ADDITIONAL FEATURES

- 45-lb capacity, each pocket
- 5-Year Limited parts warranty
- Dual micro-controls
- Steel door with gasketless glass
- Available in gas heat
- Two-point roller support with center rear bearing system



AMERICA
AN AMERICAN COMPANY FOR OVER 100 YEARS

See maytagcommerciallaundry.com for warranty details.

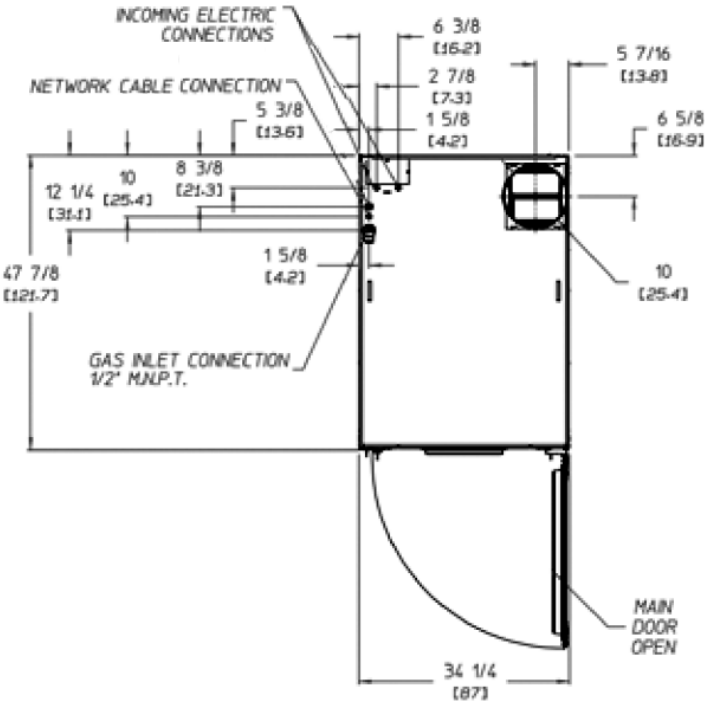
VISIT MAYTAGCOMMERCIALLAUNDRY.COM FOR MORE INFORMATION.

MAYTAG ADVANTAGE SERIES

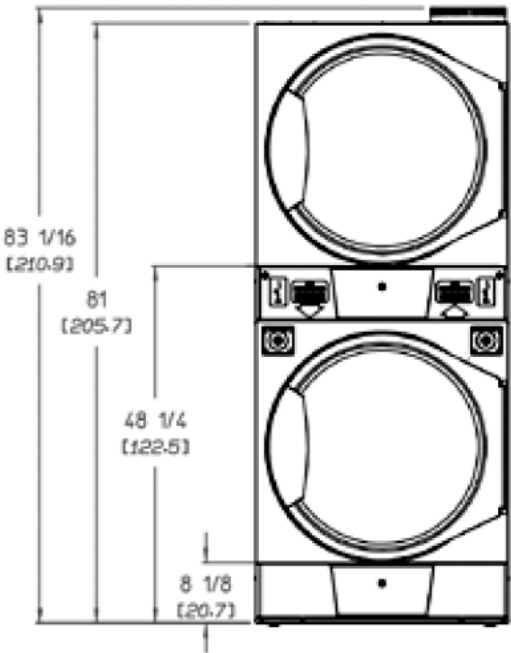
STACKED DRYER • 45-LB CAPACITY • VENDED
MLG46PD



TOP VIEW



FRONT VIEW



MLG46PDAWS MLG46PDWW	VENDED GAS
CAPACITY	
Maximum Capacity* Dry Weight — lb (kg)	45 (20.4)
Tumbler Diameter* — in. (cm)	32-3/4 (83.2)
Tumbler Depth* — in. (cm)	30 (76.2)
Tumbler Volume* — cu. ft. (L)	14.6 (413.4)
Tumbler/Drive Motor* — hp (kW)	1/3 (0.25)
Blower/Fan Motor* — hp (kW)	1/2 (0.37)
DIMENSIONS	
Cabinet Width — in. (cm)	34-1/4 (87)
Cabinet Depth — in. (cm)	47-7/8 (121.6)
Cabinet Height — in. (cm)	81 (205.7)
Door Opening (diameter)* — in. (cm)	27 (68.6)
Door Sill Height (top pocket / bottom pocket) — in. (cm)	50-1/4 (127.64) / 10-1/4 (26.04)
Dryers per 20'/40' Container	10/21
Dryers per 48'/53' Container	25/28
APPROXIMATE WEIGHT	
Net Weight — lb (kg)	640 (290)
Shipping Weight — lb (kg)	700 (318)
ELECTRICAL REQUIREMENTS	
Voltage Available	120V 1ø 2w 60 Hz
Approx. Amp Draw (Amps)	7.8 per pocket (15.6 total)
Breaker Size (Amps)	15 per pocket or 20 per dryer
GAS / AIRFLOW / CONNECTIONS	
Airflow* — CFM (CMM)	525 (14.9)
Heat Input* — BTU/hr (kcal/hr)	82,000 (20,677)
Gas Inlet Connection Size — in.	1/2" M.N.P.T.
Exhaust Connection (diameter) — in. (cm)	10 (25.4)

*Per pocket



Dimensions are for planning purposes only. See specific instructions for proper installation. Because of continuous product improvement, Maytag reserves the right to change specifications without notice.